



EXPERIENCE • VISION • VALUE



Investor Presentation

September 2012

TSXV: SSE

Safe Harbour Statement

TSXV: SSE

Investors are cautioned that, except for statements of historical fact, certain information contained in this document includes "forward-looking information" with respect to a performance expectation for SSE. Such forward-looking statements are based on current expectations, estimates and projections formulated using assumptions believed to be reasonable and involving a number of risks and uncertainties which could cause actual results to differ materially from those anticipated. Such factors include, without limitation, fluctuations in foreign exchange markets, the price of commodities in both the cash market and futures market, changes in legislation, taxation, controls and regulations of national and local governments and political and economic developments in Canada and other countries where SSE carries-out or may carry-out business in the future, the availability of future business opportunities and the ability to successfully integrate acquisitions or operational difficulties related to technical activities of mining and reclamation, the speculative nature of exploration and development of mineral deposits located, including risks in obtaining necessary licences and permits, reducing the quantity or grade of reserves, adverse changes in credit ratings, and the challenge of title. The Company does not undertake an obligation to update publicly or revise any forward-looking statements or information, whether as a result of new information, future events or otherwise, unless so required by applicable securities laws.

Presentation Overview

- Corporate Summary
- Big Easy -Property Overview
 - Epithermal Model
 - Results To Date
 - 2012-2013 Program
- Uranium Update
- REE Update

Our Company

TSXV: SSE

Newfoundland and Labrador focus

Prospect Portfolio

- Gold / Silver
- Uranium
- Rare Earth Elements

Early Stage Value Generator



Leadership Team

Peter Dimmell - President and CEO

- 40 plus years experience as a geologist
- Past President PDAC
- Director/Board Member of several Junior Mining Co's

Lloyd Hillier - Chairman

- Successful Labrador entrepreneur & business owner

Gordon Barnhill - CFO & VP Corporate

- 25 Years in investment banking

Paul Snow - Investor Relations

- Geologist / MBA
- 15 year in Marketing, Communications and IR



Corporate Summary

Sept 11, 2012	
Listing	TSXV: SSE
Head office	Bridgewater, Nova Scotia
Shares Issued	111,607,805
Warrants	7,809,596
Options	11,185,000
Fully diluted	128,912,401
52 week High/Low	\$0.10 - \$0.03
Share Price Range	\$.05-\$.07
Market Capitalization	7,124,507
Cash	\$200,000
Debt	Nil

Big Easy – Gold Silver Prospect

- Big System - pervasive alteration / mineralization
- 294 Claims - subject to 3% NSR (buyback of 1.5%)
- Classic epithermal style gold / silver prospect
- Core area -1.7 km strike x 300-500m wide
- Potential strike length of 5 km plus



ET zone



BE Sinter

Big Easy – Location

TSXV: SSE

- Island of Newfoundland - East Coast
- 2 hrs. from St. John's / 20 minutes from Clarenville
- 5 km off Trans Canada Highway – Road accessible
- Power line passes through property



Big Easy – Looking North

TSXV: SSE



Big Easy Prospect – Exploration History

2010 Program

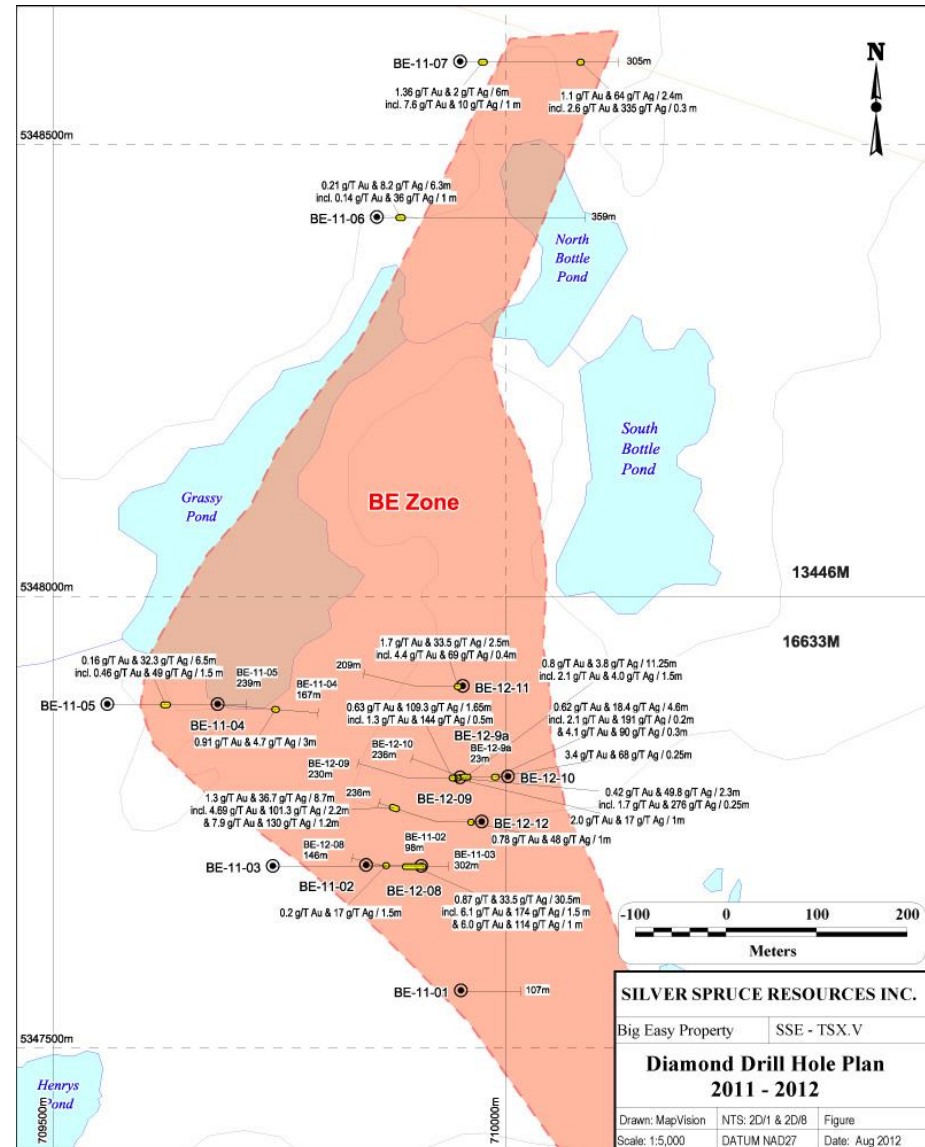
- Geology / Prospecting
- Trenching – 6 trenches
- Geophysics - IP

2011 - Phase I Drilling Program

- 7 holes / 1577m
- 1.2 km strike length

Phase II Drilling – 2012

- 5 holes / 1080m
- 200 m strike length

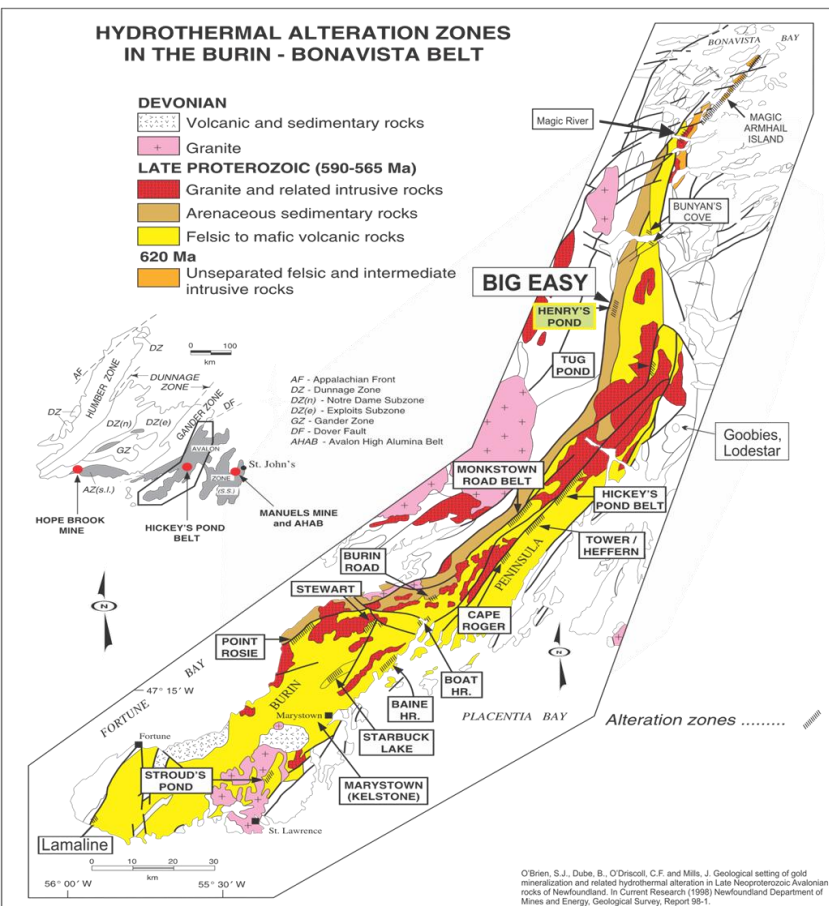


Big Easy Prospect – Regional Model

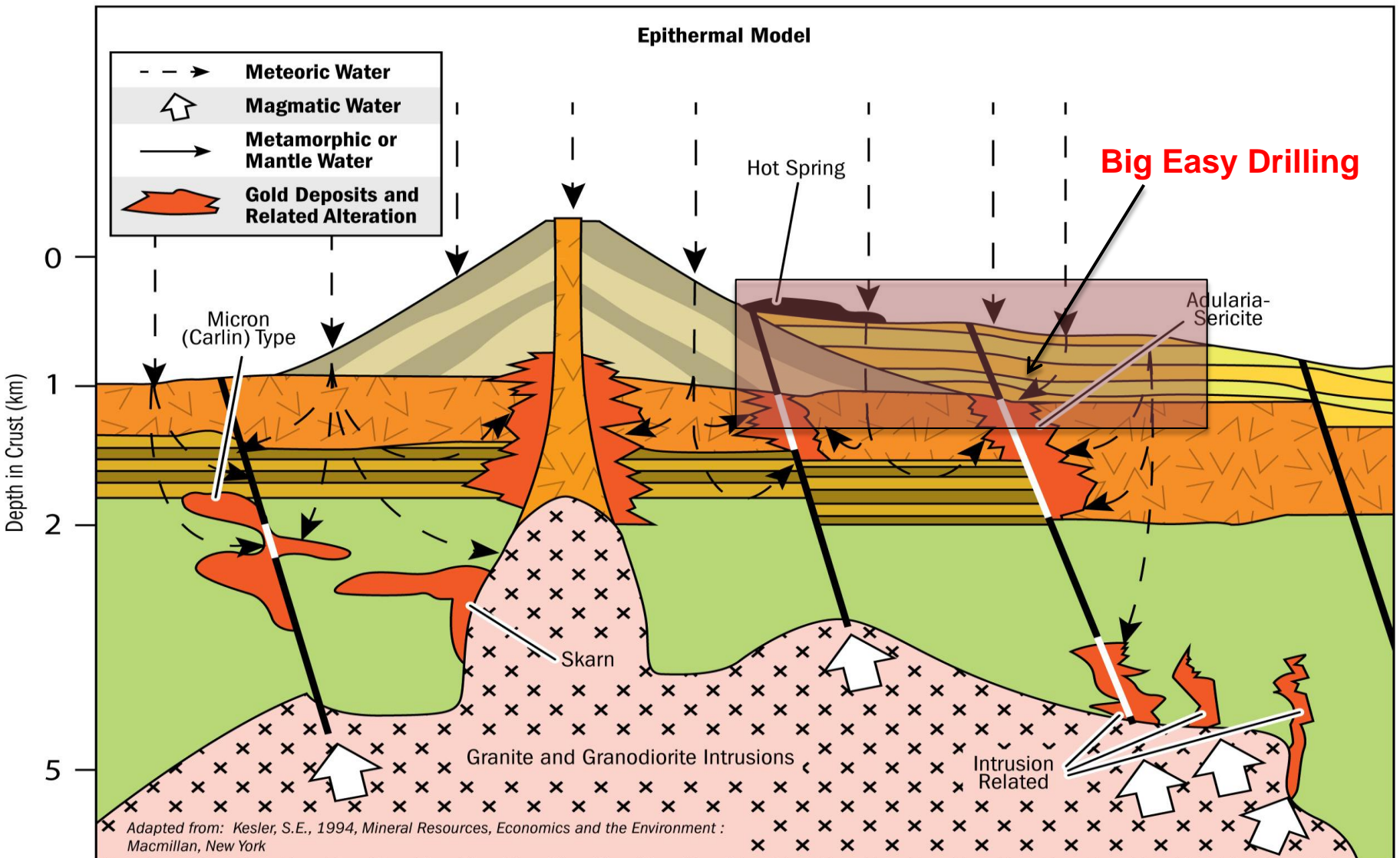
- Northern extension of the 250 km Burin Peninsula high sulphidation belt
- Mineralization hosted in silicified sedimentary units near faults

Growing Recognition as a Significant District

- Silver Spruce's exploration and drilling
- Recent work by NL Geological Survey and Memorial University
- Recent discoveries by prospectors in the southern part of the belt - Lamaline Area



Big Easy Prospect – Model



Big Easy Prospect – 2011 Drilling Program

- 7 DDH - 1577m
- Over a 1.2 km strike length
- Deepest hole - 365m / 276m TVD

Objectives

- Test alteration, IP targets and surface geology / rock samples

Assay Highlights

- Best intersections deep – brecciated veins / silicified pyritic breccia
 - 6 g/t Au / 174 g/t Ag over 1.5m
 - 2.5 g/t Au / 74 g/t Ag over 7m
 - 0.87 g/t Au / 33 g/t Ag over 30m
- All holes intersected gold/silver mineralization

Big Easy Prospect – 2011 Drilling Program

What We Learned

- Large / Extensive System
 - alteration is pervasive and continues to depth
- Gold/Silver in epithermal veins and breccias
- Classic epithermal textures
 - chalcedonic quartz, calcite blading (boiling)
- Structural information on vein orientations

Big Easy Prospect – 2012 Drilling Program

- 5 DDH - 1080m, 200m strike length
- Deepest hole - 230m / 199m TVD

Objectives

- Test zone in area of best 2011DD intersection BE-11-3
- Test structural input on vein orientation by drilling to the west
- Structural and mineralogical information

Highlights

- Abundant narrow veining - less breccia
 - BE-12-9 - 5.65-5.9m (0.25m) - 276 g/T Ag, 1.73 g/T Au
 - BE-12-10 30.7-30.9m (0.2m) - 191 g/T Ag, 2.11 g/T Au
- Wider zones of brecciated quartz / adularia veining
 - BE-12-12 – 200.1-208.8 (8.7m) – 36.5 g/T Ag / 1.3 g/T Au

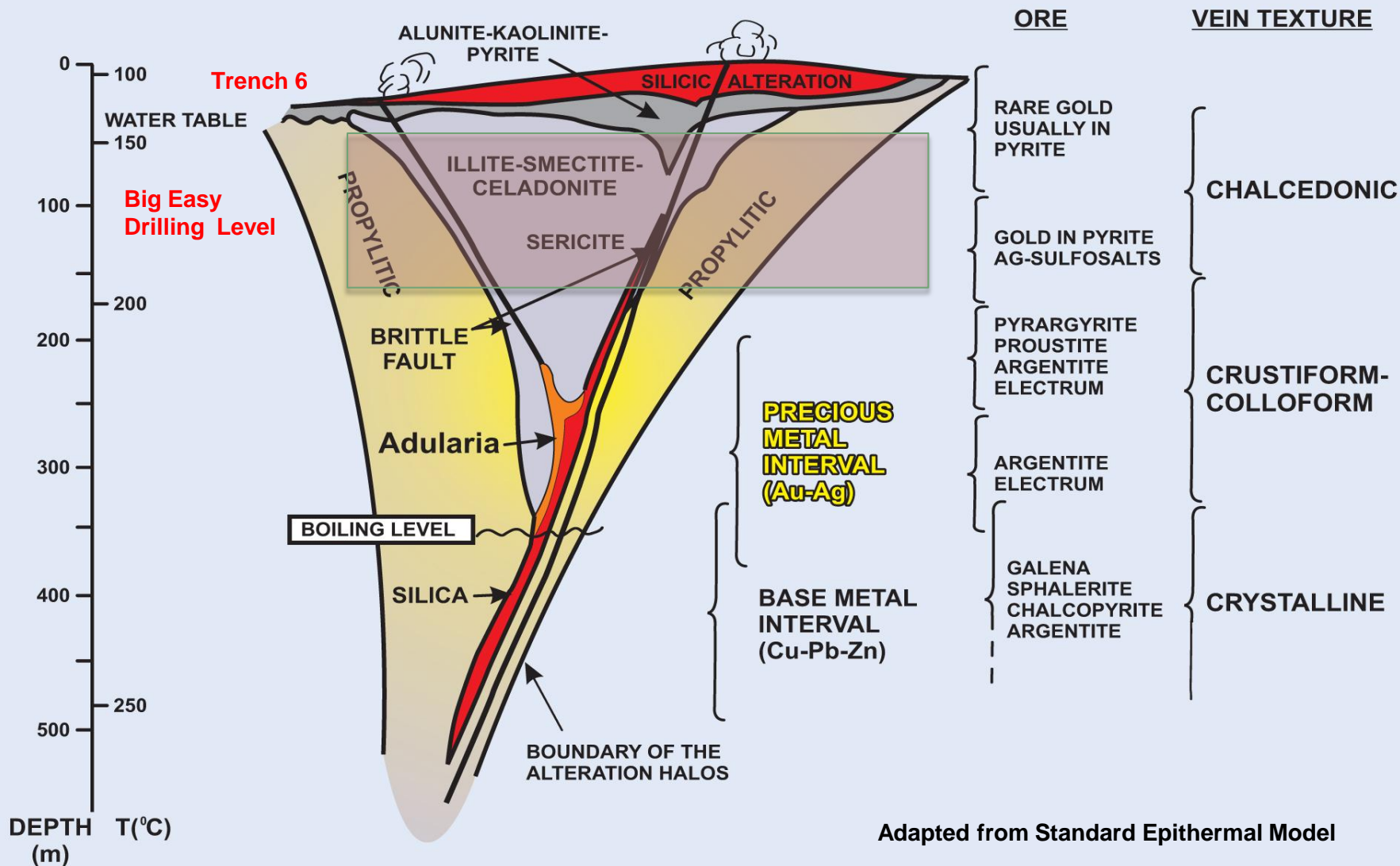


Big Easy Prospect – 2012 Drilling Program

What We Learned

- Confirmed vein orientations - intersected more veins
- Two mineralization types
 - Silver enriched – up to 276 g/t w/ significant gold values
 - Gold enriched with minor silver values
- Better understanding of location in the epithermal system
 - quartz / adularia veins
 - native silver / electrum ?
 - crustiform vein textures

Big Easy Prospect Model



Big Easy – Drilling Highlights

TSXV: SSE

Hole # (TV Depth)	Length m	Au g/t	Ag g/t
BE 11-3 (231 m)	30.5	0.87	33
including	7.0	2.5	74
including	1.5	6.1	174
including	1.0	6.0	114
BE 11-5 (176 m)	6.5	0.16	32.2
including	1.5	0.46	49
BE 11-7 (247 m)	6.0	1.4	2
including	1.0	7.6	10
BE 12-9 (199 m)	2.3	0.42	49.8
including	0.25	1.73	276
including	1.65	0.63	109.3

Notes: Hole #7 is 900m north of BE -11-3 , holes 4 and 5 were too short to test to depth



Big Easy – Drilling Highlights

TSXV: SSE

Hole # (TV Depth)	Length m	Au g/t	Ag g/t
BE-12-10 (209)	4.6	0.62	18.4
including	0.2	2.11	191
including	0.3	4.1	90
and	11.25	0.8	3.8
including	1.5	1.97	4
including	0.75	2.3	8
BE-12-11 (177)	2.5	1.7	33.5
including	0.4	4.39	69
BE-12-12 (202)	8.7	1.3	36.7
including	2.2	4.6	101
including	1.2	7.9	130
Notes: Holes BE-11-1 to 7 were drilled to the east, while holes BE-12-8 to 12 were drilled to the west .			



Big Easy – 2012 - 2013 Program

Ongoing 2012 Program:

- Airborne Survey - High Resolution Magnetic / VLF-EM
- 3D Compilation - Caracle Creek Int. Consulting
- Mineralogical Studies - Research partnership

Proposed 2013 Program:

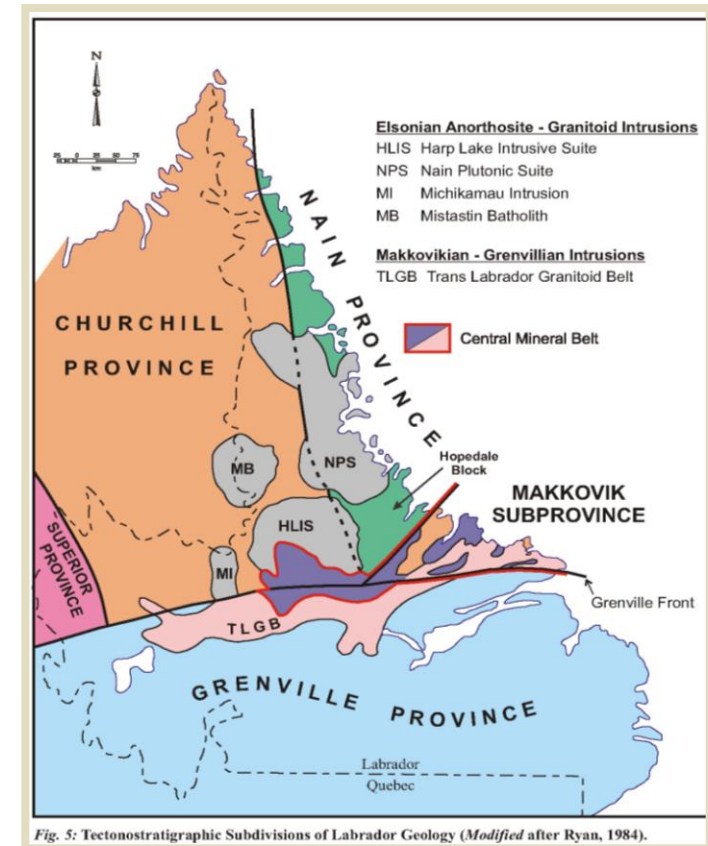
- Deep Penetration Ground Geophysics - \$300,000
 - IP / MT Survey – Titan 24
- Phase 3 drill program – 2500m - \$600,000
 - Testing deep targets
- Exploration along BE – ET trend - \$100,000
 - Prospecting, geochemistry, geophysics



Labrador Uranium

Central Mineral Belt (CMB) – Labrador

- Key properties remain in good standing
 - consolidation of properties
- SSE committed to the district
 - CMB Joint Venture - 2% NSR on 115 km²
 - Fish Hawk Lake Acquisition
- Bullish on mid to long term outlook for uranium



Labrador Uranium Activity

TSXV: SSE

3 Year Moratorium lifted April 2012

Aurora / Paladin-Michelin Deposit

- 135 M lbs U_3O_8 resources
- Significant 2012 and onward exploration / development program



Crosshair Energy

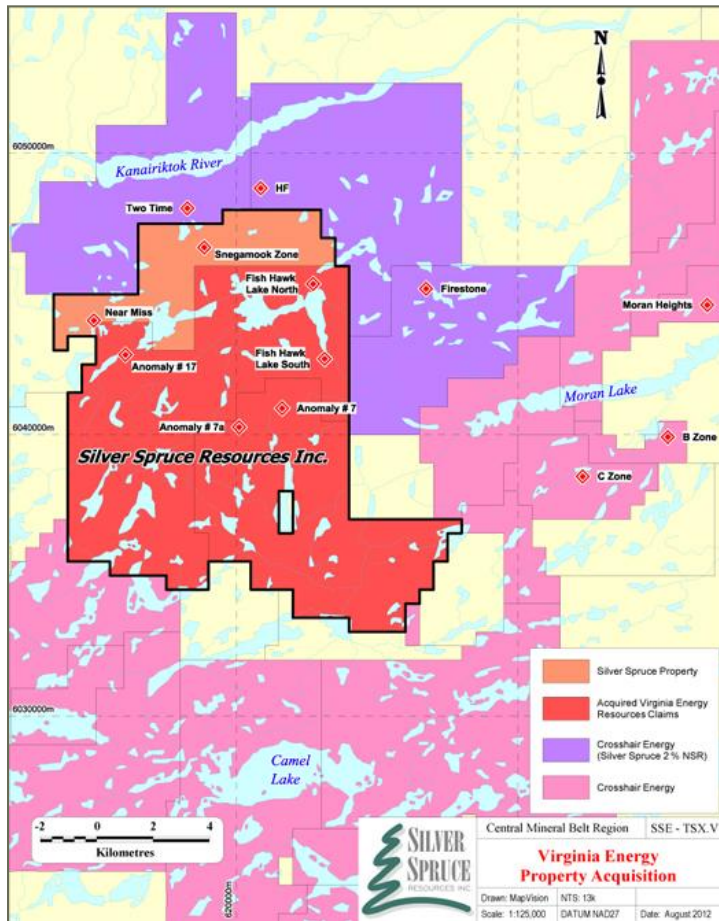
Armstrong – Moran Corridor

- approx. 10 M lbs U_3O_8 indicated / inferred

Two Time Zone (TT)

- approx. 6 M lbs indicated / inferred – SSE 2% NSR

SSE - Labrador CMB Uranium Holdings



Crosshair - Two Time Zone

- 2.33 M pounds U_3O_8 indicated (1.82M tonnes - 0.058%)
- 3.73 M pounds U_3O_8 inferred (3.16M tonnes - 0.053%)
- Actively drilling for more tonnes

SSE - Snegamook Zone

- 206 ppm U_3O_8 (0.41 lbs/ton) over 73 m
- Along strike from Two Time zone
- TT drilling <100 m from N boundary

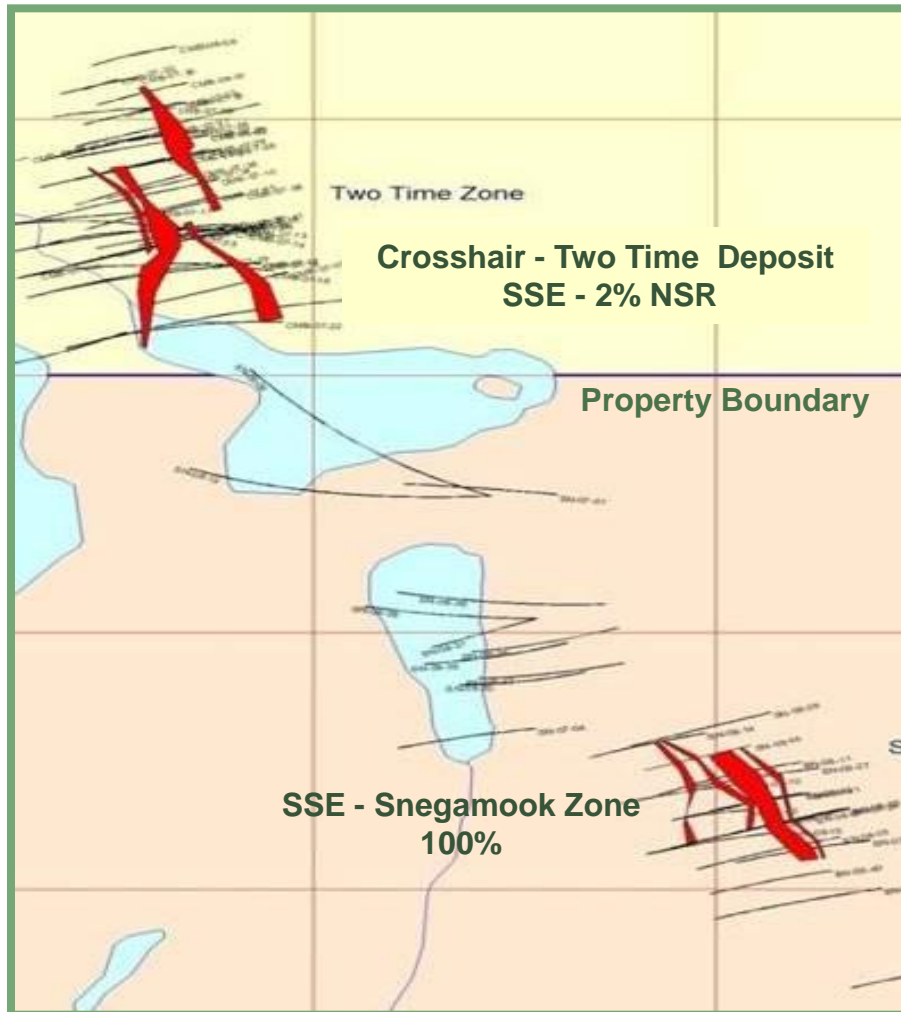
SSE - Fish Hawk Lake

Anom. 7 - 0.13% U_3O_8 / 23.4 m, incl. 0.25% / 9.7 m

FHLS - 0.063% U_3O_8 / 27.9 m, incl. 0.18% / 4.5 m and
0.106% / 9.9 m



SSE - Labrador CMB Uranium Holdings



Pope's Hill REE Trend

- district scale opportunity
- excellent location, with road access, power and a port
- Great Western Minerals Group JV on part of the regional play



Key Messages:

- Experienced leadership
- Big Easy Gold /Silver – accessible district scale property
- Uranium in Labrador - Committed to being a long-term player
- Systematic approach to exploration and development

Thank you for your interest!

TSXV:SSE

